

BALUN TRANSFORMER

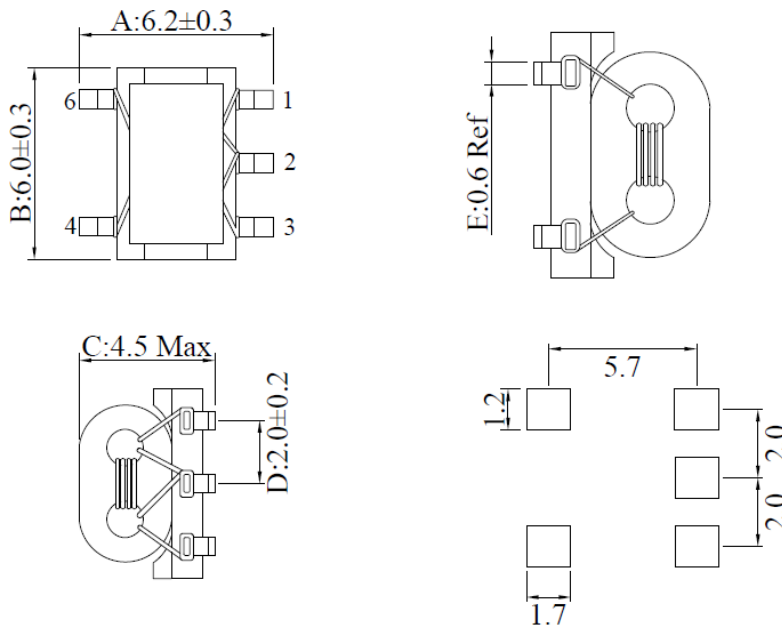


- ◆ Excellent EMI performance
- ◆ Suitable for reflow soldering
- ◆ Current-compensated double choke
- ◆ High rated currents, reduced components height
- ◆ Comply with ROHS

ELECTRICAL SPECIFICATIONS@25°C (Operating Temperature :-40°C to +85°C)

Part Number	Turns Ratio @20KHz,1V	OCL @ 100 KHz, 0.1V		DCR	
		1-3	4-6	1-3	4-6
TM11069ST	1:2±2%	3uH Min	12uH Min	0.2 Ω Max	0.2 Ω Max

MECHANICAL(Unit:mm)



SUGGESTED PAD LAYOUT

SCHEMATICS

